



FALL/WINTER 2012 / 2013

CATEGORY SELECTION

WINTER 2012/13
MENS FIT OVERVIEW



MENS
STREET FIT

FEAURE INFO
comf

FEAURED ON
TRIUMPH jacket
WALTHER jacket



MENS
SNOWBOARD FIT

FEAURE INFO
comf

FEAURED ON
ECLIPSE jacket
JUPITER jacket



MENS
SNOWBOARD LONG FIT

FEAURE INFO
comf

FEAURED ON
URANUS jacket
NOVA jacket



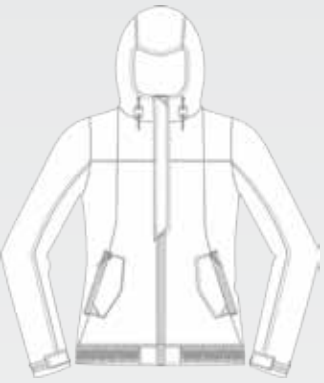
MENS
EXPLORERS FIT

FEAURE INFO
comf

FEAURED ON
REMINGTON parka

CATEGORY SELECTION

WINTER 2012/13
WOMENS FIT OVERVIEW



WOMENS
STREET FIT

FEAURE INFO
comf

FEAURED ON
GUZZI jacket
COLT jakcet



WOMENS
SNOWBOARD FIT

FEAURE INFO
comf

FEAURED ON
NEBULA jacket



WOMENS
SNOWBOARD LONG FIT

FEAURE INFO
comf

FEAURED ON
SOLAR jacket
BROWNING jacket



WOMENS
EXPLORERS FIT

FEAURE INFO
comf

FEAURED ON
WINCHESTER parka

CATEGORY SELECTION

WINTER 2012/13
FABRIC OVERVIEW



KRYPTONITE® 30 000
HI-PERFORMANCE
OUTWEAR FABRIC

FEAURE INFO

It is not just strong wind and unpleasant weather conditions, combined with water in all its forms - rain, snow, ice and vapor. It is also a lot of heat and vapor created by your body that quickly create uncomfortable, stuffy feeling inside your clothing. **KRYPTONITE** effectively eliminates this problem by superior waterproof and breathable performance.

KRYPTONITE fabric ensures that you are comfortable in all conditions. It is the ultimate combination of weatherproof and breathability. The 10,000mm lamination offers superior protection against wind, snow and rain. Yet when you are active, and your body is producing heat and perspiration, fabric with 10,000g/sqm breathability allows these vapors to escape, helping your body's natural cooling process.

FABRIC PERFORMANCE
**WATERPOOFNESS:
30.000MM**
**MOISTURE PERMEABILITY:
10.000G/M2/24H**



KRYPTONITE® 15 000
HI-PERFORMANCE
OUTWEAR FABRIC

FEAURE INFO

It is not just strong wind and unpleasant weather conditions, combined with water in all its forms - rain, snow, ice and vapor. It is also a lot of heat and vapor created by your body that quickly create uncomfortable, stuffy feeling inside your clothing. **KRYPTONITE** effectively eliminates this problem by superior waterproof and breathable performance.

KRYPTONITE fabric ensures that you are comfortable in all conditions. It is the ultimate combination of weatherproof and breathability. The 15,000mm lamination offers superior protection against wind, snow and rain. Yet when you are active, and your body is producing heat and perspiration, fabric with 10,000g/sqm breathability allows these vapors to escape, helping your body's natural cooling process.

FABRIC PERFORMANCE
**WATERPOOFNESS:
15.000MM**
**MOISTURE PERMEABILITY:
10.000G/M2/24H**



KRYPTONITE® 5 000
OPTI-PERFORMANCE
SHELL FABRIC

FEAURE INFO

KRYPTONITE offers ballanced combination of weatherproof and breathability for urban and casua outdoor use.

The 5,000mm coating offers outstanding protection against wind, snow and rain. And the 5,000g/sqm breathability allows the vapors to escape, helping your body's natural cooling process.

FABRIC PERFORMANCE
**WATERPOOFNESS:
5.000MM**
**MOISTURE PERMEABILITY:
5.000G/M2/24H**



KRYPTONITE® 3 000
OPTI-PERFORMANCE
SHELL FABRIC

FEAURE INFO

KRYPTONITE offers ballanced combination of weatherproof and breathability for urban use.

The 3,000mm coating offers solid protection against wind, snow and rain. And the 3,000g/sqm breathability allows the vapors to escape, helping your body's nautral cooling process.

FABRIC PERFORMANCE
**WATERPOOFNESS:
3.000MM**
**MOISTURE PERMEABILITY:
3.000G/M2/24H**



KRYPTONITE
SOFT - SHELL

FEAURE INFO

KRYPTONITE softshell is a technical fabric. The outer side is waterproof and the inside is made with soft fleece.

The 5,000mm lamination offers solid protection against wind, snow and rain. The 5,000g/sqm breathability allows the vapors to escape, helping your body's natural cooling process. and the bonded fleece layer offers nice soft interior, which keeps your body warm.

FABRIC PERFORMANCE
**WATERPOOFNESS:
5.000MM**
**MOISTURE PERMEABILITY:
5.000G/M2/24H**



MEATFLY CUSTOMIZED
PERFECTEX®
SHELL FABRIC

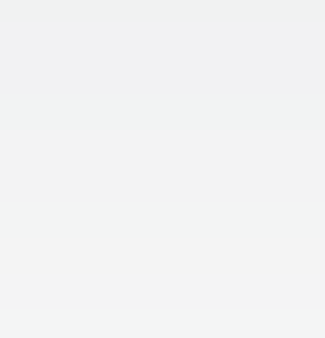
FEAURE INFO

During outdoor activity your body creates a lot of heat and vapor that can quickly create an uncomfortable, stuffy feeling inside your clothing. **PERFECTEX®** effectively eliminate this problem trough a condensation control system that pulls moisture trough the fabric and assures consistently high breathability.

Technology used is laminated membrane thin, highly breathable, waterproof layer that is heat bonded to the back of the shell fabric for enchanted waterproofing. This ultra-thin membrane promotes high breathability, waterproof performance and softer hand-feel then coating alone.

The fabric is made with TEFLON™ finish for even higher waterproof performance and higher fabric protection.

FABRIC PERFORMANCE
**WATERPOOFNESS:
10.000MM**
**MOISTURE PERMEABILITY:
10.000G/M2/24H**

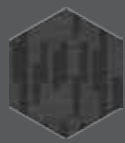


CITY-PROOF
SHELL FABRIC

FEAURE INFO

Coated fabric with basic performance, which wont let you down during your night escapades.

FABRIC PERFORMANCE
**WATERPOOFNESS:
3.000MM**
**MOISTURE PERMEABILITY:
3.000G/M2/24H**



BLACK PLAID



BLACK STRIPES



BLUE STRIPES



YELLOW



ORANGE



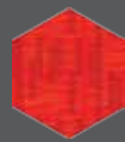
RED



BLUE CHECKERS



RED CHECKERS



RED PLAID



PINK



MAGENTA



PURPLE

COLORS



TRUE RED



LUMBERJACK RED



BROWN



BLUE



GREEN



SKY BLUE



GREEN



BEIGE



BIRDS



LIGHT GREY



DARK GREY



BLACK

UNITED



CUSTOM SHOP
collection

LOOKBOOK
GUZZI



LOOKBOOK
NORTON



LOOKBOOK
TRIUMPH



LOOKBOOK
DUCATI

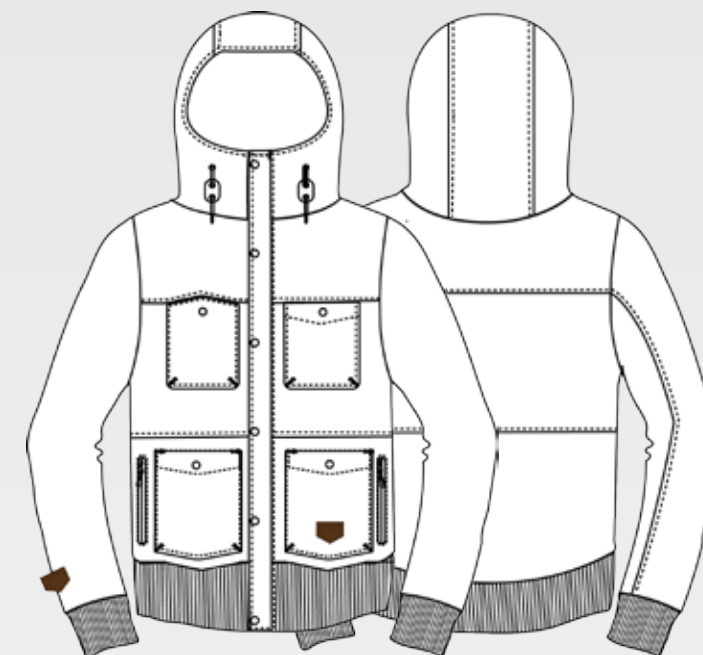


LOOKBOOK
TRIUMPH



LOOKBOOK
GUZZI





NORTON

softshell

KRYPTONITE SOFTSHELL (5.000mm/5.000sqm)
windproof, knitted cuffs, fixed hood, waxed laces w
leather stoppers
street fit (slim and slightly longer)

2 590 Kč / 120 €



A/ BLACK STRIPES



B/ GREY-BLUE STRIPES
WILDCARD

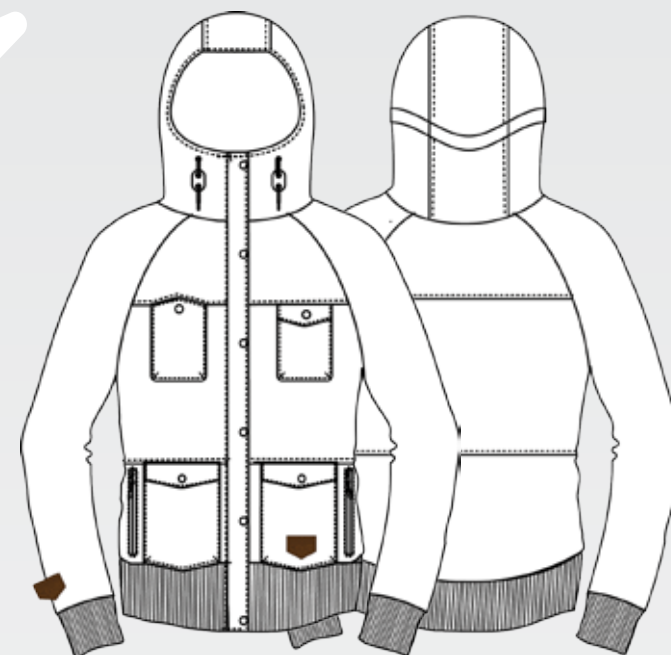


C/ BLACK



D/ RED
WILDCARD





DUCATI softshell

KRYPTONITE SOFTSHELL (5.000mm/5.000sqm)
windproof, knitted cuffs, fixed hood, waxed laces w
leather stoppers
street wmn's fit (slim and slightly longer)

2 490 Kč / 115 €



A/ BLACK STRIPES
WILDCARD



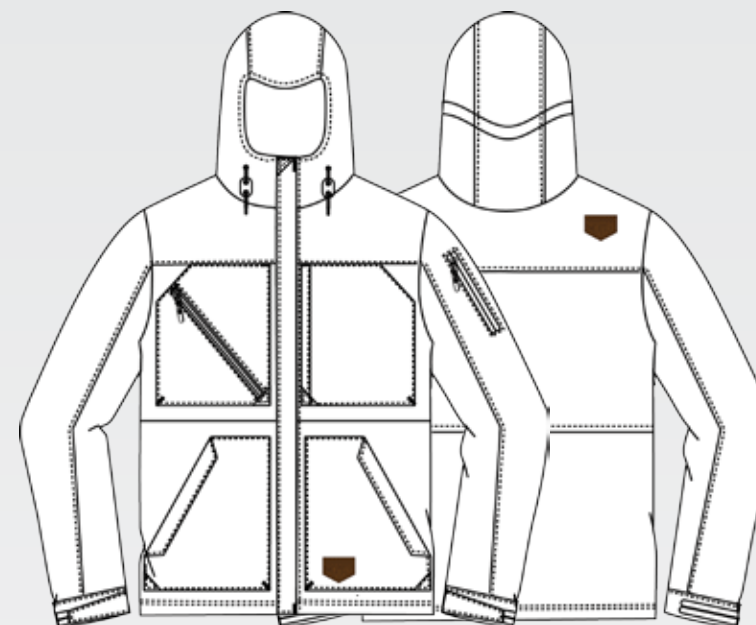
B/GREY-BLUE STRIPES



C/ BLACK



D/ RED



TRIUMPH

street jacket

KRYPTONITE 5000 (5.000mm/5.000sqm)
windproof, all seams taped, fixed hood, 2x armpit
venting, tricot + flannel lining
street fit (slim and slightly longer)

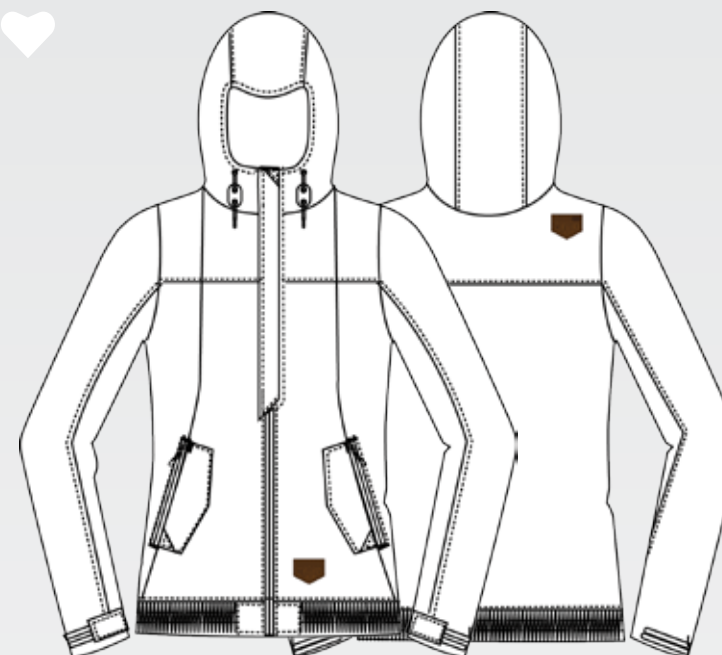
3 990 Kč / 180 €



A/ DARK GREY PLAID



B/ RED PLAID



GUZZI

street jacket

KRYPTONITE 5000 (5.000mm/5.000sqm)
windproof, all seams taped, fixed hood, 2x armpit
venting, tricot + flannel lining
street wmn's fit (slim and slightly longer)

3 590 Kč / 165 €



A/ DARK GREY PLAID
WILDCARD



B/ BLACK PLAID



HUNTING
collection

LOOKBOOK
WALTHER



LOOKBOOK
COLT



LOOKBOOK
REMINGTON



LOOKBOOK
BROWNING



LOOKBOOK
BROWNING



LOOKBOOK
WALTHER



LOOKBOOK
REMINGTON



LOOKBOOK
WINCHESTER

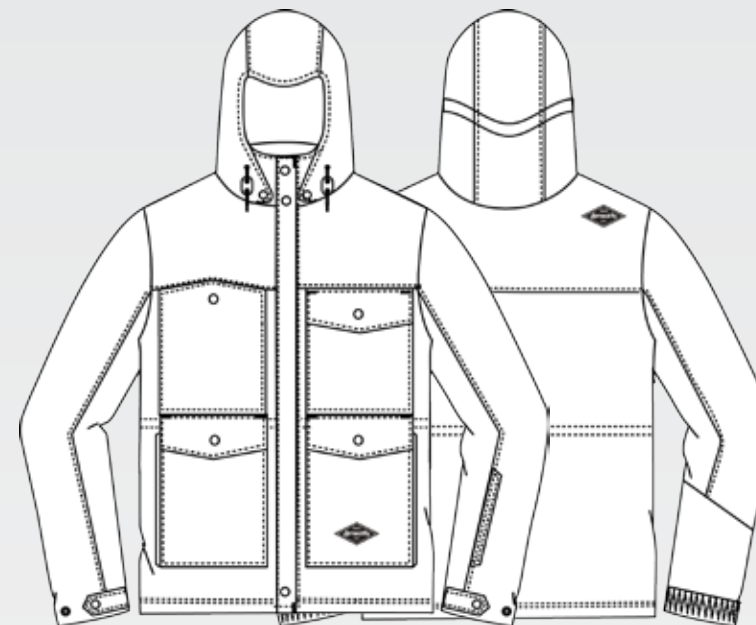


LOOKBOOK
REMINGTON



LOOKBOOK
COLT





WALTHER

jacket

KRYPTONITE 3000 (3.000mm/3.000sqm)
windproof, critical seams taped, removable hood,
waxed laces w leather stoppers, 2x armpit venting,
tricot+flannel lining
street fit (for both city and slopes)

3 890 Kč / 175 €



A/ BLACK



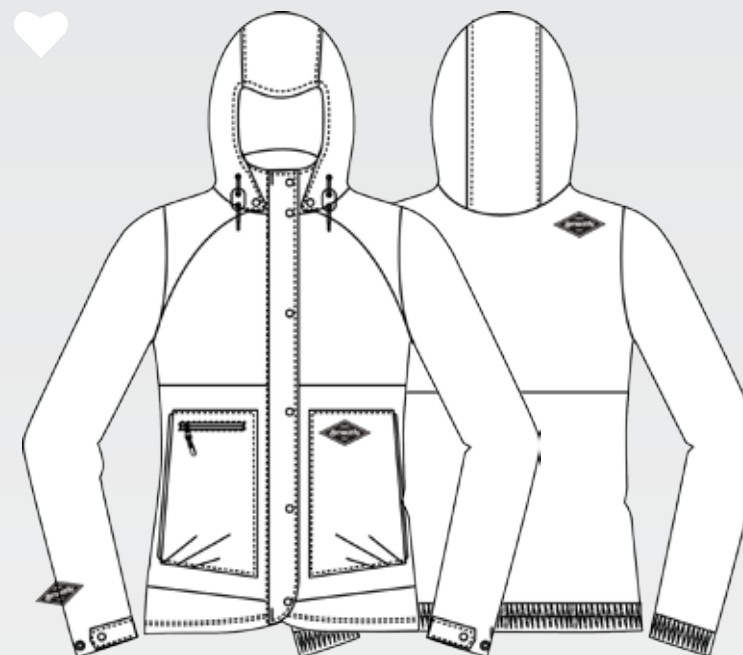
B/ RED



C/ RED CHECK



D/ BLUE CHECK



COLT jacket

KRYPTONITE 3000 (3.000mm/3.000sqm)
windproof, critical seams taped, removable hood,
waxed laces w leather stoppers, 2x armpit venting,
tricot+flannel lining
street wmn's fit (for both city and slopes)

3 790 Kč / 170 €



A/ BLACK
WILDCARD



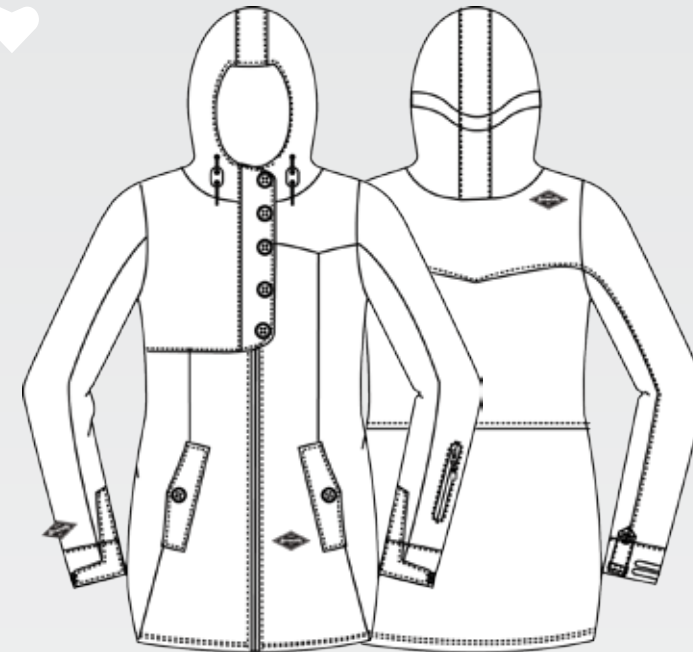
B/ RED
WILDCARD



C/ RED CHECK



D/ BLUE CHECK
WILDCARD



BROWNING

jacket

KRYPTONITE 15000 (15.000mm/10.000sqm)
windproof, fully taped seams, fixed hood, waxed laces
w leather stoppers, 2x armpit venting, tricot lining,
snow-catcher, lycra sleeves, iPOD pocket
wmns snb long fit (long and comfortable)

4 490 Kč / 205 €



A/ BLACK
WILDCARD



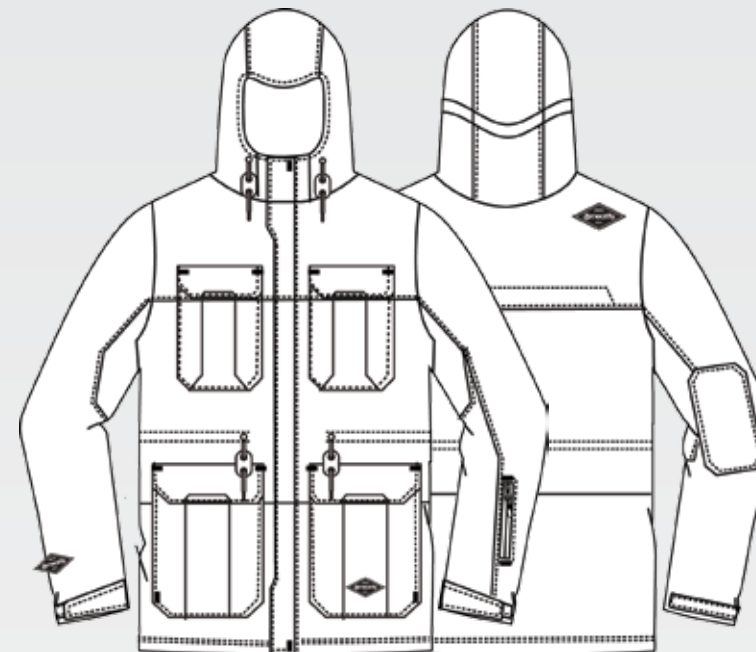
B/ RED



C/ GREEN



D/ BEIGE



REMINGTON

parka

KRYPTONITE 15000 (15.000mm/10.000sqm)
windproof, fully taped seams, fixed hood, waxed laces
w leather stoppers, 2x armpit venting + back vent-
ing, fur + flannel + tricot lining, snow-catcher, fleece
sleeves, extend cuffs, iPOD pocket
explorers fit (slim and long)

4 990 Kč / 225 €



A/ RED-GREEN



B/ BROWN-GREEN



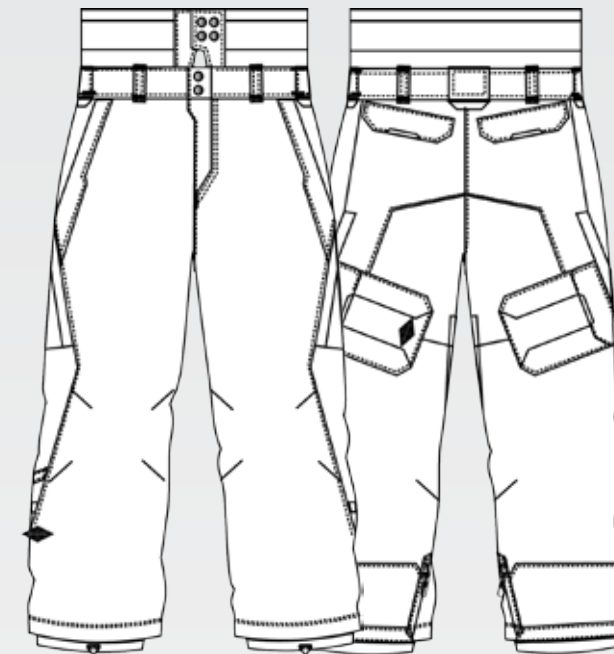
C/ BIRDS



D/ RED-GREY



E/ BLACK-RED
WILDCARD



MAGNUM

pants

KRYPTONITE 15000 (15.000mm/10.000sqm)
windproof, fully taped seams, removable reversed
snowcatcher, 4x venting, fleece + mesh zone lining,
tool pocket
relaxed fit (comfortable, but not too baggy)

3 990 Kč / 180 €



sorry, no image available



A/ BLACK
WILDCARD



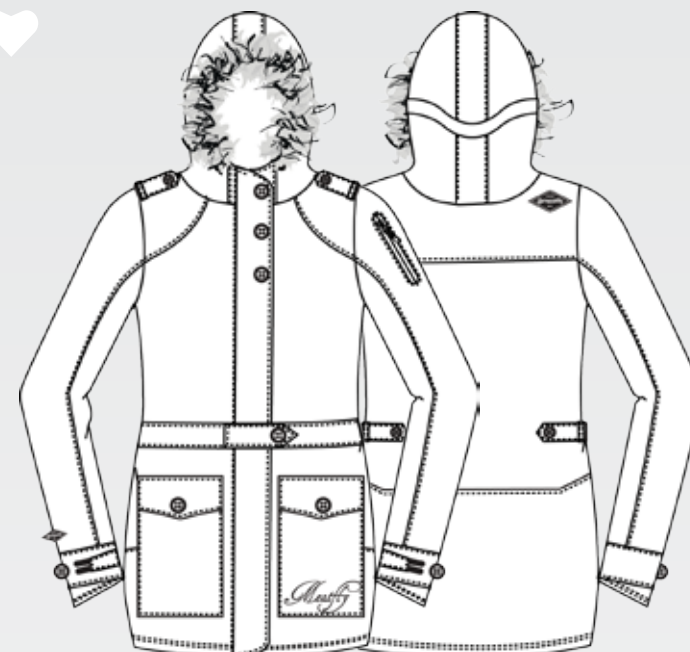
B/ RED



C/ GREEN



D/ BROWN



WINCHESTER

parka

KRYPTONITE 15000 (15.000mm/10.000sqm)
windproof, fully taped seams, fixed hood, waxed laces
w leather stoppers, 2x armpit venting, fur + satin lin-
ing, snow-catcher, fleece sleeves, extend cuffs, iPod
pocket

explorers fit (slim and long)

4 990 Kč / 225 €

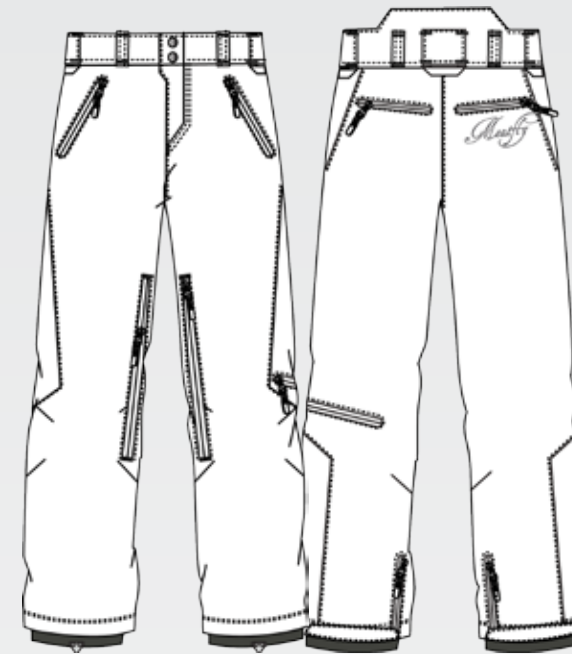


A/ BIRDS



B/ DARK GREY PLAID
WILDCARD





BERETTA

pants

KRYPTONITE 15000 (15.000mm/10.000sqm
windproof, fully taped seams, 2x inseam venting,
mesh lining, tool pocket
relaxed fit (comfortable, but still sexy)

2 990 Kč / 135 €



A/ BLACK



B/ RED



C/ GREEN



D/ BROWN
WILDCARD



E/ BEIGE
WILDCARD





COSMOS
collection

LOOKBOOK
SUPERSONIC



LOOKBOOK
SOLAR



LOOKBOOK
URANUS



LOOKBOOK
NOVA



LOOKBOOK
URANUS



LOOKBOOK
CHIKITA

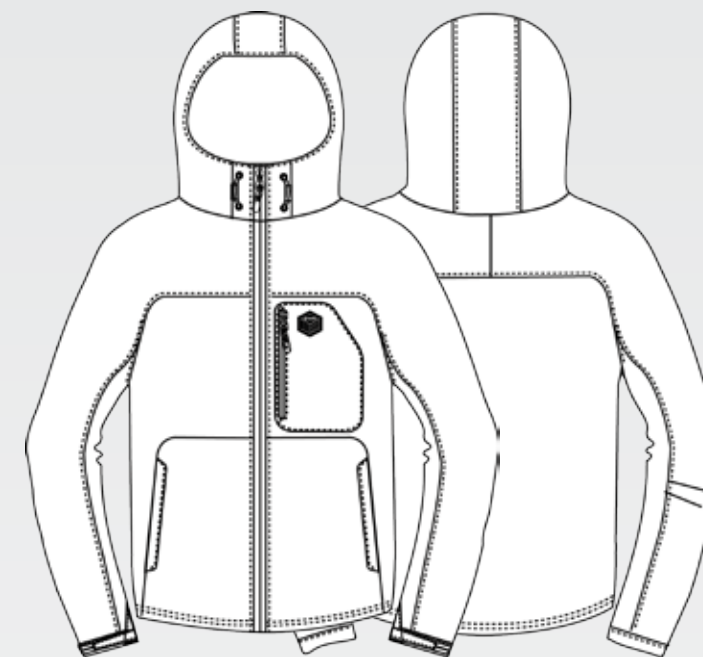


LOOKBOOK
NOVA



LOOKBOOK
JUPITER





SUPERSONIC

softshell

KRYPTONITE SOFTSHELL (5.000mm/5.000sqm)
windproof, fixed hood, waterproof zippers
technical softshell fit

2 590 Kč / 120 €



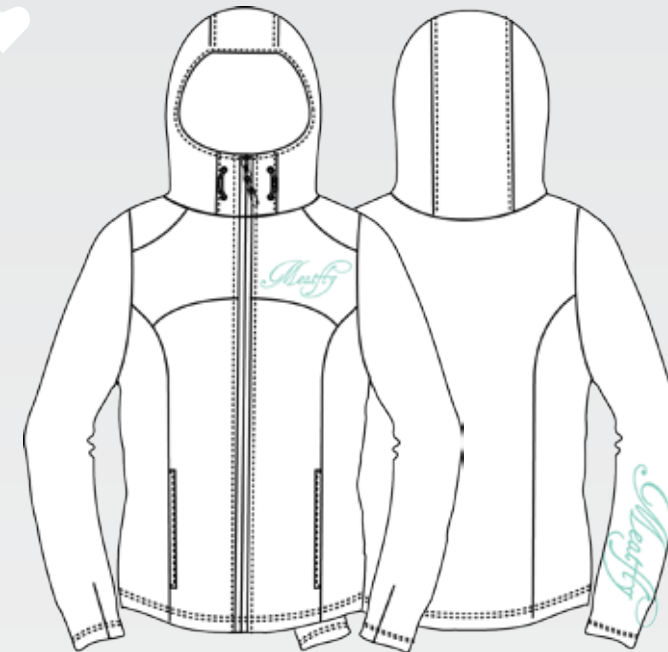
A/ BLACK
WILDCARD



B/ BLUE



C/ ORANGE



CHIKITA

softshell

KRYPTONITE SOFTSHELL (5.000mm/5.000sqm)
windproof, fixed hood, waterproof zippers
technical softshell fit

2 490 Kč / 115 €



A/ BLACK
WILDCARD



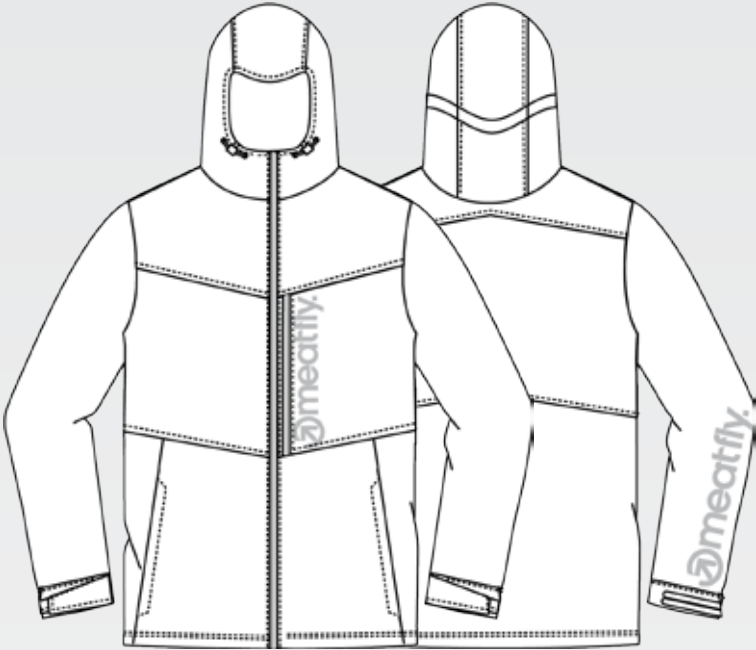
B/ BLUE



C/ ORANGE



sorry, no image available



ECLIPSE

jacket

KRYPTONITE 5000 (5.000mm/5.000sqm)
windproof, critical seams taped, fixed hood, 2x armpit
venting, nylon taffeta lining
snb fit (enough room for movement)

3 690 Kč / 165 €



A/ BLACK



B/ BLACK-BLUE-PURPLE



C/ BLUE-RED-BLACK
WILDCARD



D/ GREY-BLUE-BLACK



E/ YELLOW-BLUE-BLACK



F/ GREY-BLUE-PURPLE
WILDCARD



G/ YELLOW-BLUE
WILDCARD



H/ BLUE-BLACK



I/ GREY-PURPLE
WILDCARD



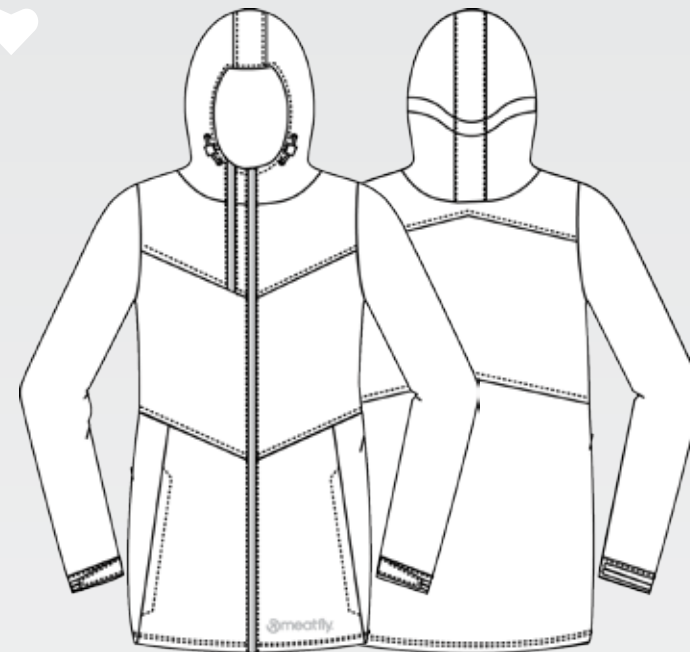
J/ RED-PURPLE
WILDCARD



K/ PURPLE-BLUE
WILDCARD



L/ GREY-BLACK
WILDCARD



NEBULA

jacket

KRYPTONITE 5000 (5.000mm/5.000sqm)
windproof, critical seams taped, fixed hood, 2x armpit
venting, nylon taffeta lining
snb fit (enough room for movement)

3 490 Kč / 160 €



sorry, no image available



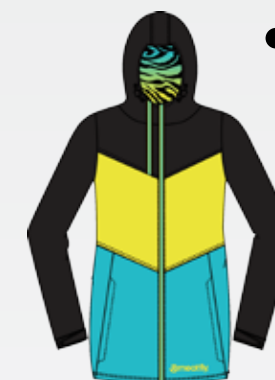
A/ BLACK



B/ BLACK-BLUE-PURPLE



C/ BLACK-PINK-BLUE
WILDCARD



D/ BLACK-YELLOW-BLUE
WILDCARD



E/BLACK-BLUE-GREY
WILDCARD



F/ GREY-BLUE-PURPLE
WILDCARD



G/ PURPLE-RED-PINK



H/ GREY-PINK-BLACK
WILDCARD



I/ PINK-PURPLE
WILDCARD



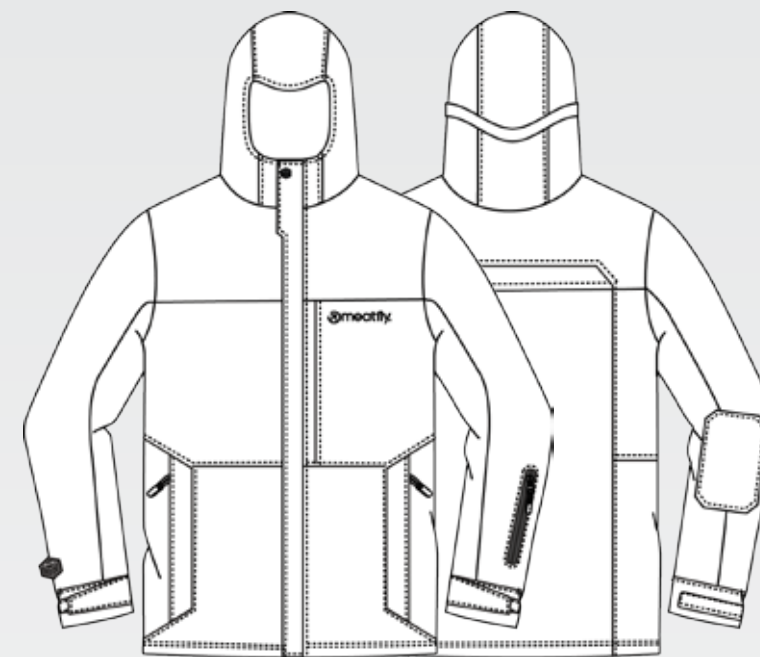
J/ YELLOW-BLUE



K/ GREY-PURPLE
WILDCARD



L/ BLUE-PINK
WILDCARD



JUPITER jacket

KRYPTONITE 15000 (15.000mm/10.000sqm)
windproof, fully taped seams, removable hood, 2x
armpit venting, tricot lining, snow-catcher, lycra
sleeves, iPOD pocket
snb fit (enough room for movement)

3 990 Kč / 180 €



A/ GREY-BLACK
WILDCARD



B/ BLUE-ORANGE



C/ PURPLE-MAGENTA
WILDCARD



D/ BLUE-GREEN
WILDCARD



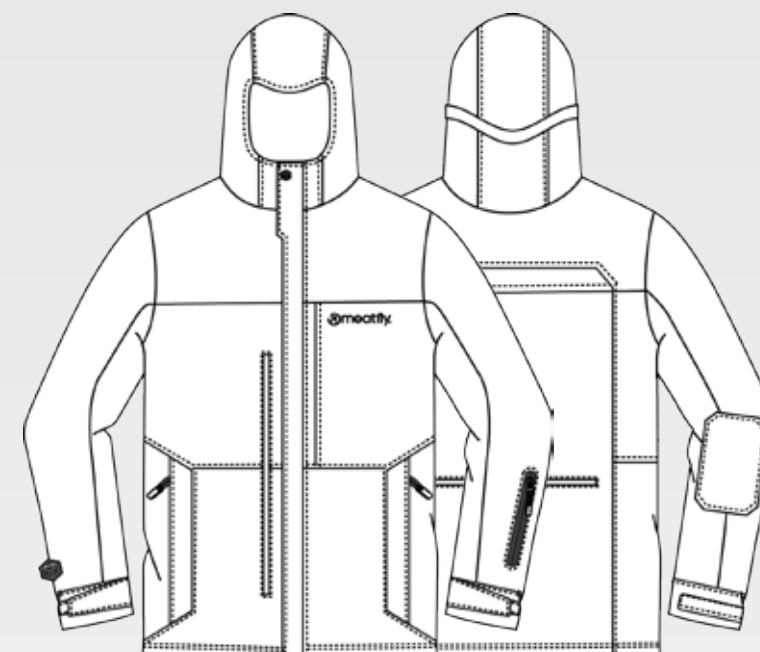
E/ GREY-BLUE-BLACK



F/ RED-GREY-BLACK



G/ BLACK-BLUE-YELLOW
WILDCARD



JUPITER KITE jacket

KRYPTONITE 15000 (15.000mm/10.000sqm)
windproof, fully taped seams, removable hood, 2x
armpit venting, tricot lining, snow-catcher, lycra
sleeves, iPOD pocket
snb long fit (keep your back warm)

4 990 Kč / 225 €



A/ ORANGE-PURPLE



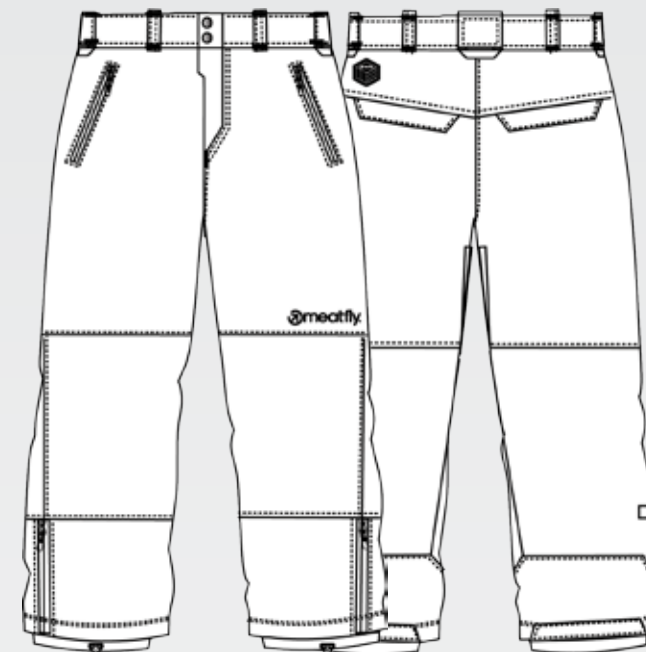
B/ BLU-YELLOW-ORANGE



C/ BLUE-ORANGE-BLACK



D/ GREY MULTI



PLUTO

loose fit pants

KRYPTONITE 15000 (15.000mm/10.000sqm)
windproof, fully taped seams, 2x inseam venting,
mesh lining, tool pocket
loose fit

2 990 Kč / 135 €



A/ BLACK



B/ DARK GREY



C/ LIGHT GREY



D/ BLUE



E/ PURPLE
WILDCARD



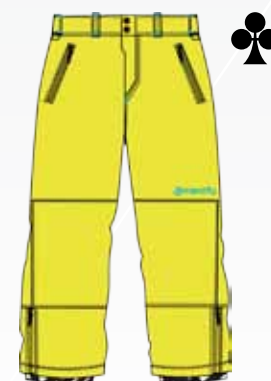
F/ MAGENTA
WILDCARD



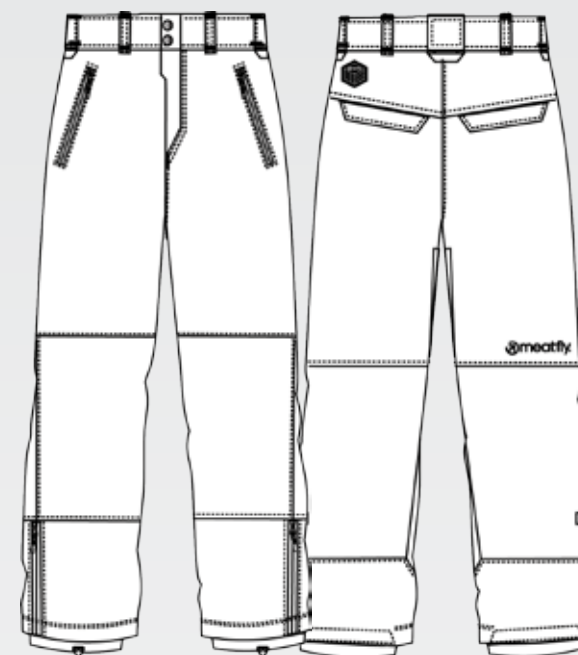
G/ RED
WILDCARD



H/ ORANGE
WILDCARD



I/ YELLOW
WILDCARD



PLUTO

slim fit pants

KRYPTONITE 15000 (15.000mm/10.000sqm)
windproof, fully taped seams, 2x inseam venting,
mesh lining, tool pocket
slim fit

2 990 Kč / 135 €



A/ BLACK



B/ DARK GREY



C/ LIGHT GREY



D/ SKY BLUE



E/ PURPLE
WILDCARD



F/ MAGENTA
WILDCARD



G/ RED
WILDCARD

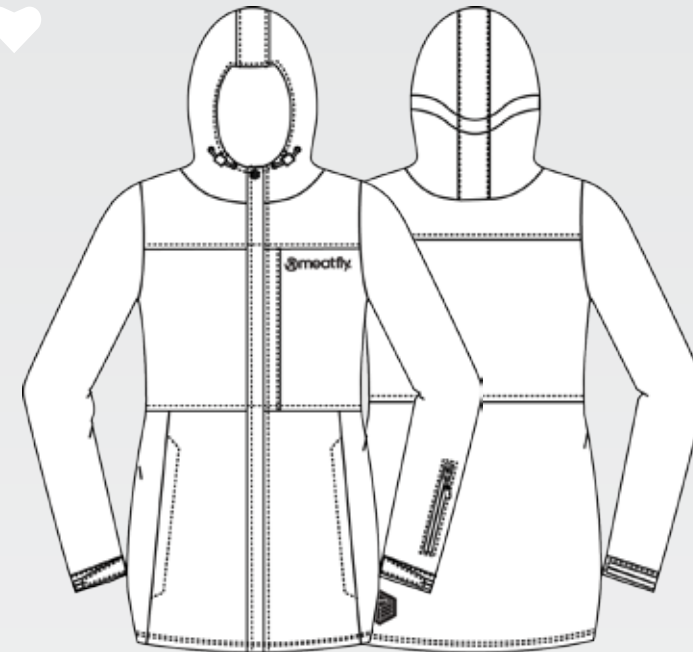


H/ ORANGE
WILDCARD



I/ YELLOW
WILDCARD





SOLAR jacket

KRYPTONITE 15000 (15.000mm/10.000sqm),
windproof, fully taped seams, removable hood, 2x
armpit venting, tricot lining, snow-catcher, lycra
sleeves, iPOD pocket
wmns snb long fit (long and comfortable)

3 990 Kč / 180 €



A/ BLUE-ORANGE
WILDCARD



B/ SKY BLUE-BLUE



C/ PURPE-MAGENTA



D/ BLUE-GREEN



E/ PURPLE-BLUE-RED
WILDCARD



F/ RED-GREY-BLACK



G/ YELLOW MULTI



H/ BLACK MULTI



I/ BLACK EMBOSS
WILDCARD



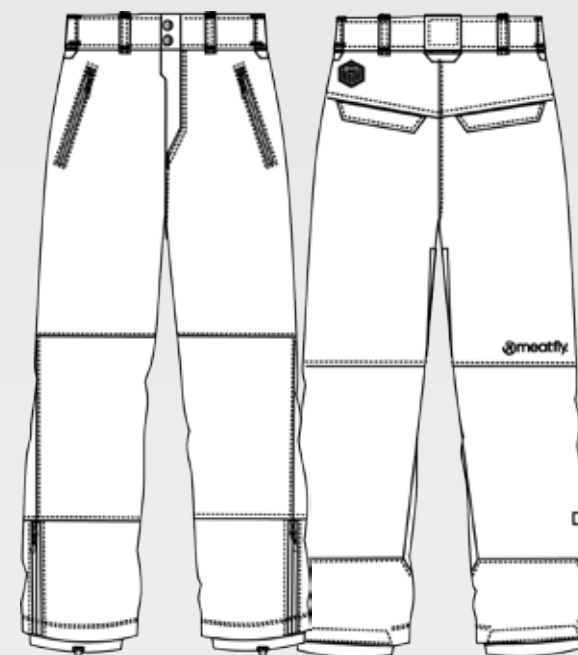
J/ PURPLE EMBOSS
WILDCARD



K/ BLUE EMBOSS
WILDCARD



L/ ORANGE EMBOSS
WILDCARD



GEMINI

relaxed fit pants

KRYPTONITE 15000 (15.000mm/10.000sqm)
windproof, fully taped seams, 2x inseam venting,
mesh lining, tool pocket
relaxed fit (comfortable, but still sexy)

2 990 Kč / 135 €



A/ BLACK



B/ DARK GREY
WILDCARD



C/ LIGHT GREY
WILDCARD



D/ SKY BLUE



E/ BLUE



F/ PURPLE



G/ MAGENTA



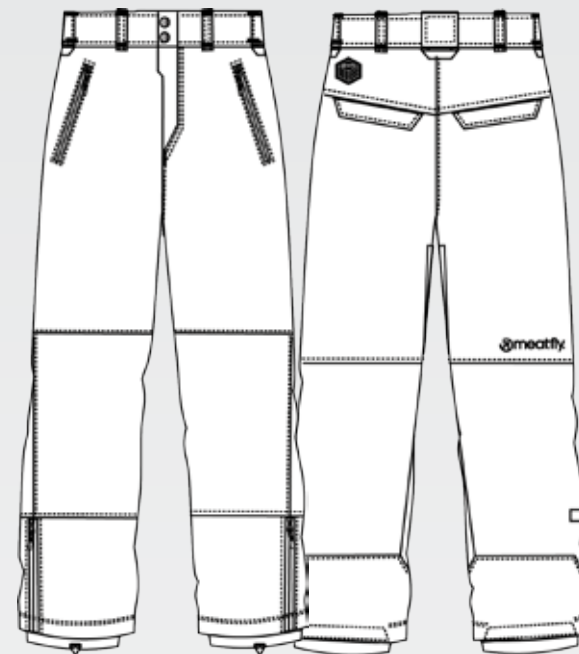
H/ RED



I/ ORANGE



J/ YELLOW



GEMINI

slim fit pants

KRYPTONITE 15000 (15.000mm/10.000sqm)
windproof, fully taped seams, 2x inseam venting,
mesh lining, tool pocket
slim fit (ski contour)

2 990 Kč / 135 €



sorry, no image available



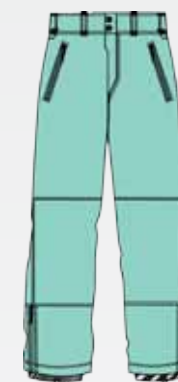
A/ BLACK



B/ DARK GREY
WILDCARD



C/ LIGHT GREY
WILDCARD



D/ SKY BLUE



E/ BLUE



F/ PURPLE



G/ MAGENTA



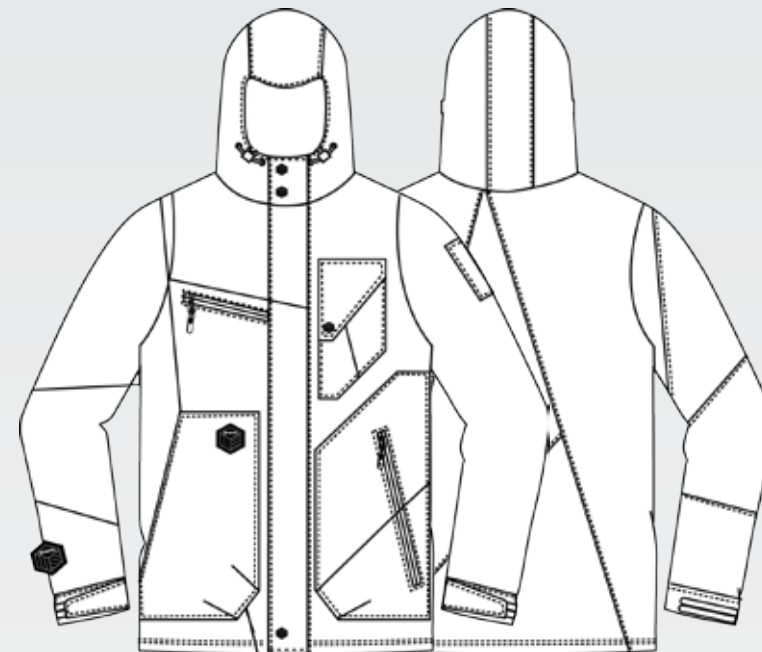
H/ RED



I/ ORANGE



J/ YELLOW



URANUS

jacket

KRYPTONITE 15000 (15.000mm/10.000sqm)
windproof, fully taped seams, fixed hood, 2x arm-pit venting, tricot lining, snow-catcher, lycra sleeves, iPOD pocket
snb long fit (keep your back warm)

4 690 Kč / 215 €



A/ BLACK EMBOSS



B/ PURPLE EMBOSS
WILDCARD



C/ BLUE EMBOSS
WILDCARD



D/ PINK EMBOSS
WILDCARD



E/ CYBER GREEN
WILDCARD



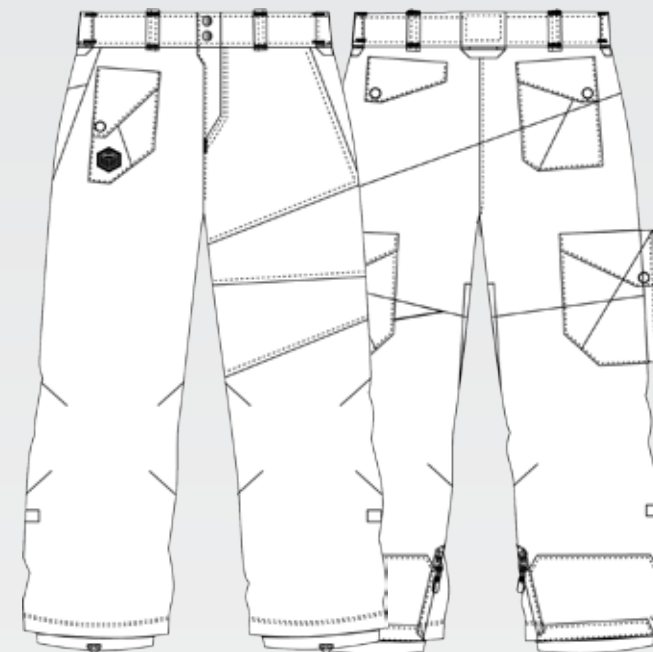
F/ YELLOW EMBOSS
WILDCARD



G/ GREY MULTI
WILDCARD



H/ BLACK MUTI
WILDCARD



MARS

pants

KRYPTONITE 15000 (15.000mm/10.000sqm)
windproof, fully taped seams, 2x inseam venting, tri-
cot lining, tool pocket
loose fit

3 690 Kč / 165 €



A/ BLACK EMBOSS
WILDCARD



B/ PURPLE EMBOSS
WILDCARD



C/ BLUE EMBOSS
WILDCARD



D/ PINK EMBOSS
WILDCARD



E/ CYBER GREEN
WILDCARD



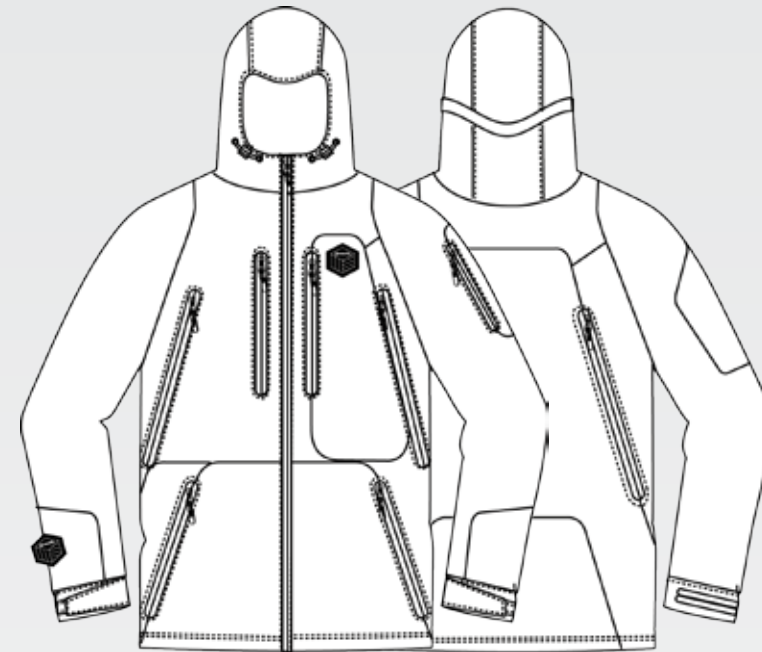
F/ YELLOW EMBOSS
WILDCARD



G/ GREY MULTI
WILDCARD



H/ BLACK MULTI
WILDCARD



NOVA jacket

KRYPTONITE 30000 (30.000mm/10.000sqm)
Teflon finish, windproof, waterproof zippers, fully
taped seams, fixed hood, 4x airflow venting, zone
fleece lining, snow-catcher, lycra sleeves, iPod pocket,
season pass holder
snb long fit (keep your back warm)

4 990 Kč / 225 €



A/ BLACK EMBOSS



B/ BLUE EMBOSS

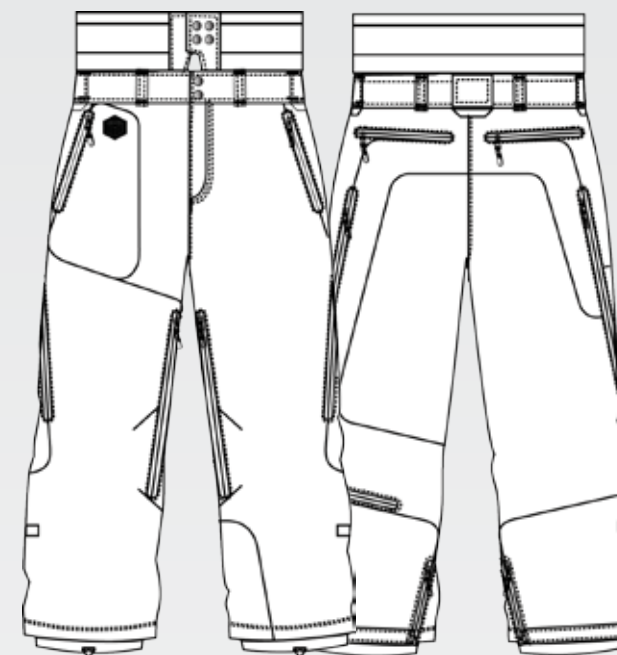


C/ ORANGE EMBOSS



D/ COSMOS
WILDCARD





IO pants

KRYPTONITE 30000 (30.000mm/10.000sqm)
Teflon finish, windproof, waterproof zippers, fully
taped seams, 4x airflow venting, zone fleece fining,
removable reversed snow-catcher, PANTS HIGH com-
patible, tool pocket
relaxed fit

3 990 Kč / 180 €



A/ BLACK EMBOSS



B/ BLUE EMBOSS

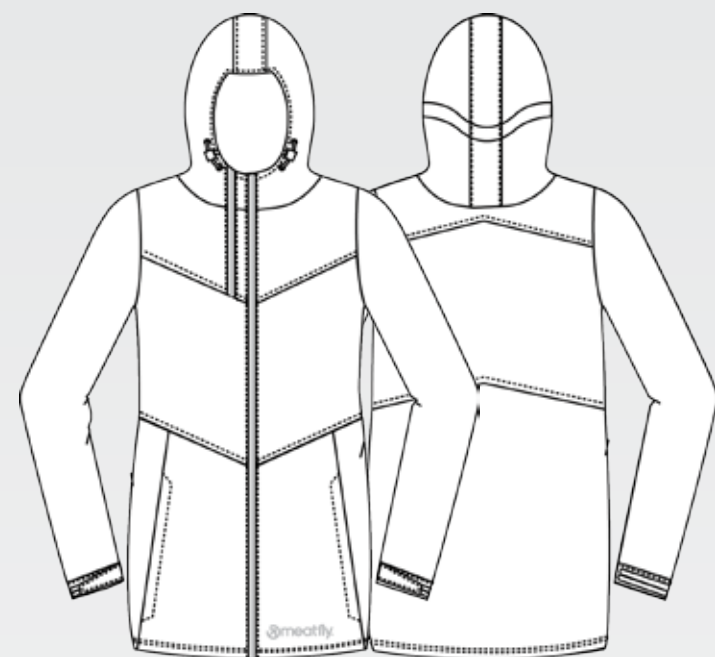


C/ ORANGE EMBOSS



D/ COSMOS
WILDCARD

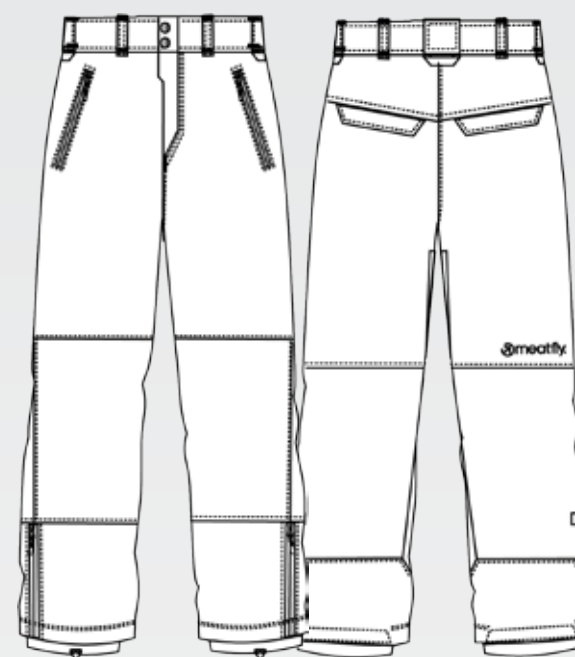




KIDS jacket

KRYPTONITE 5000 (5.000mm/5.000sqm)
windproof, fully taped seams, removable hood, 2x
armpit venting, tricot lining, snow-catcher
kids fit

2 990 Kč / 135 €



KIDS pants

KRYPTONITE 5000 (5.000mm/5.000sqm)
windproof, fully taped seams, tricot lining
kids fit

2 490 Kč / 115 €



A/ PINK-PURPLE
WILDCARD



B/ BLACK-BLUE-PURPLE
WILDCARD



C/ YELLOW-BLUE
WILDCARD



D/ BLUE-PURPLE
WILDCARD



E/ BLACK
WILDCARD



A/ PINK
WILDCARD



B/ PURPLE
WILDCARD



C/ YELLOW
WILDCARD



D/ BLUE
WILDCARD



E/ BLACK
WILDCARD